

CLIENT PROFILE		
<p>Our clients, Kin and Carol are from Manhattan in New York. They are moving South because of Carol's condition as a paraplegic and the cold winters. Carol became a paraplegic after a car accident. Despite Carol's condition, she is a successful business owner. She is a financial analyst. Kin is an art dealer. He purchases paintings and sculpture and resells them to clients. They met at a museum showing of the Metropolitan Museum of Art. Carol and Kin connected over their mutual desire for art. They dated for several years and got married.</p> <p>Carol was born and raised in Manhattan. She loves the city and urban life. At an early age, she developed a desire for solving math problems. Eventually, she decided to matriculate at Harvard where she studied Mathematics as an undergraduate and obtained her MBA degree from the Business school. Kin was born and raised in Hong Kong. He moved to New York City at the age of 15. As an undergraduate, he studied art at Yale University; then he attended Harvard University where he obtained his master's degree in art from the History of Art and Architecture school. After graduating, Kin worked for a museum and traveled around the world putting together art shows.</p>	<p>Kin and Carol have no children and no pets. Kin's cultural background is Asian and Carol is Caucasian American. They like reading, art, and museums. However, they dislike carpet, pets, and rain. Their favorite place in Atlanta is the High Museum of Art. Their favorite place in the world is Victoria Harbor in Hong Kong. For breakfast, they like to eat at J. Christopher's. For dinner, they like to eat at Ruth Chris's Steakhouse. On the weekends, Kin and Carol like to go to the park, to the movies, or to a museum. In particular, they like going to Piedmont Park for fun. For hobbies, Kin likes to golf and Carol likes to make jewelry. In the evenings, Kin & Carol like to read, listen to Classical music, and cook. From New York, they are bringing all of their belongings, artwork, and sculpture. They have a few sentimental pieces of jewelry. If they could live anywhere, Kin & Carol would live in Hong Kong. An ideal day would consist of Kin and Carol, listening to music, cooking & eating, a walk in the park, and reading. Kin has an extensive music collection. Carol's favorite object is a broach. Kin likes to wear Ralph Lauren attire and Carol likes to stay comfortable in J. Crew.</p>	<p>Carol is seated in a wheelchair. She needs spaces that are accessible. As a paraplegic, she needs space to maneuver her wheelchair. Carol also needs dedicated office space because she runs her financial analyst business out of her home. Kin is 5'7". He has an early onset of glaucoma. Most glaucoma patients have problems with low vision. Low vision creates problems with glare, sensitivity to excessive light, and difficulty with contrast. With this eye condition, Kin cannot be exposed to extreme sunlight and brightness. He needs spaces that are moderately lit, but that provide additional lighting. Their design style is Modern Belgian. They both collect paintings and sculpture as their art work style/medium. And they both love neutral colors and natural fabrics.</p>

DESIGN CONCEPT / NARRATIVE		
<p>Our clients, Kin and Carol Wong, love the modern aesthetic. They also love the current trend of the Belgian look which has a lot of neutral colors and natural fabrics. We would contrast this with black and oil rubbed bronze products and will install a beamed ceiling made of natural wood. This is appropriate for our clients because Kin's glaucoma condition requires little to no glare or brightness. This environment should be soothing to Kin. Carol likes this aesthetic as well. This neutral backdrop will help display Kin's art and sculpture collection as well as Carol's jewelry pieces.</p> <p>Lighting pieces will be made of natural wood or dark wrought iron like a vintage Belgian industrial iron light. We will select finishes that are not reflective or shiny. Most of the lighting will be placed on dimmers for control and efficiency. In the living room and dining room, track lighting and recessed down lights will be utilized to showcase art, sculpture, and jewelry. Chandeliers will be integrated into the space as well. Low level lighting will be incorporated to help light Carol's path as well as provide soft lighting for Kin. For Carol's office, task lighting will be included for work and jewelry making.</p>	<p>On the patio, low level lighting and a ceiling fan with a light will be installed. In the master bedroom, task lighting will be incorporated for reading and a chandelier for general ambient light. The ceiling will be in the shape of a Mansard roof. In the master closet, we will include low level lighting and general ambient light. The master bathroom will include general ambient light and a water resistant light in the shower. The kitchen will include under-cabinet lighting and dimmable tubular fluorescent general lighting.</p> <p>The dimmable lights will reinforce the need to control lighting because of Kin's glaucoma problem. The dimmable lights will also help set the mood as Kin and Carol listen to music. The track lighting and adjustable recessed down lights will showcase Kin's artwork collection and Carol's jewelry. The task lighting is for Kin and Carol's reading and working. The low level lighting is for circulation and for reducing brightness and extreme light.</p>	<p>Beginning at the door, lighting will draw people throughout the space into the living and dining areas. Lighting on dimmers will help control the intensity of light on a room-by-room basis. Kin's artwork is of extreme importance so accenting objects will be emphasized. Lighting in between the natural wood beams will highlight this architectural feature. Low level lighting will highlight molding as well as provide lighting for the circulation path. Finally, task lighting throughout the space will be utilized to help Kin and Carol complete tasks.</p> <p>We will make use of the natural daylight coming from the windows in the living room, dining room, and the master bedroom. However, because of Kin's onset of glaucoma, the ability to control the natural daylight will be extremely important. Shades and curtains will be on a remote controlled system. Because we are changing the kitchen to an U shape and reducing or eliminating several other walls, the space will receive additional daylight. Adding dimmers in select spaces will help control energy efficiency. The shades and curtains will also keep the space cooler reducing the level of light. In addition, we will add window film to help control additional glare and intensity for Kin.</p>

PROGRAMMING

SPACE	SQ. FTG.	FURNITURE / EQUIPMENT	LAYERS OF LIGHT NEEDED	FIXTURES & LAMPS TO BE USED	SPACE	SQ. FTG.	FURNITURE / EQUIPMENT	LAYERS OF LIGHT NEEDED	FIXTURES & LAMPS TO BE USED
ENTRY, 101	75 SF	NONE	GENERAL: FROM ABOVE TO LIGHT CIRCULATION PATH TASK: FROM BELOW TO LIGHT CIRCULATION PATH	GENERAL: (2) PENDANTS, LED CONCRETE TUBE RECESSED STEP LIGHTS	LIVING ROOM, 105	264 SF	(1) SOFA (1) CHAIRS (1) OCCASIONAL TABLE (1) TV CABINET/STAND (1) ADJUST TABLE FLAT SCREEN TELEVISION (1) DESK (1) DESK CHAIR	GENERAL: LIGHT FROM ABOVE FOR CIRCULATION DECORATIVE/TASK: LIGHT FROM FLOOR AND TABLE LAMP TASK: FROM BELOW, OUTDOOR LOW LEVEL LIGHTING	GENERAL: (7) LED RECESSED DOWNLIGHTS DECORATIVE/TASK: (1) CFL FLOOR LAMP, (1) LED DESK LAMP TASK: (3) INDOOR MINI LED RESIDENTIAL RECESSED STEP LIGHTS
SPECIAL NEEDS OR CONSIDERATIONS: 18" NEEDED FOR PULL AT DOOR TO ACCOMMODATE WHEELCHAIR ACCESS LOW LEVEL LIGHTING FOR CIRCULATION AND TO REDUCE GLARE OF MORE INTENSE LIGHTS FOR OWNER WHO HAS AN EARLY ONSET OF GLAUCOMA.									
UTILITY CLOSET, 102	23 SF	(1) HOT WATER TANK (1) HEATING & COOLING UNIT	GENERAL: FROM ABOVE TO LIGHT SPACE	GENERAL: (1) RECESSED DOWNLIGHT	PATIO, 106	117 SF	(2) CHAIRS (1) OCCASIONAL TABLE (1) BARI/CABINET	GENERAL: CEILING MOUNTED IN CENTER OF PATIO TASK: FROM BELOW, OUTDOOR LOW LEVEL LIGHTING	GENERAL: CEILING FAN (1) 100W MINI HALOGEN TASK: (2) OUTDOOR MINI LED RESIDENTIAL RECESSED STEP LIGHTS
SPECIAL NEEDS OR CONSIDERATIONS: NONE									
KITCHEN, 103	131 SF	(1) STOVE (1) REFRIGERATOR (2) DISHWASHER DRAWERS (1) WASHER (FRONT LOADING) (1) DRYER (FRONT LOADING) (3) BARSTOOLS	GENERAL/TASK: CEILING MOUNTED IN CENTER OF ROOM DECORATIVE/TASK: CEILING MOUNTED ABOVE ISLAND TASK: UNDERCABINET LIGHTING, RECESSED DOWNLIGHTS IN LAUNDRY AREA, AND FROM BELOW TO LIGHT CIRCULATION PATH	GENERAL & TASK: FLUORESCENT (1) FLU TUBE IN CENTER OF ROOM DECORATIVE & TASK: PENDANTS (3) VINTAGE BELGIAN CAGE LIGHTS TASK: DOWNLIGHTS (2) LED RECESSED CANS, (4) UNDERCABINET LIGHTING TRACKS, (3) LOW LEVEL LIGHTING INDOOR MINI LED RESIDENTIAL RECESSED STEP LIGHTS	MASTER BEDROOM, 107	219 SF	(1) BED (2) SIDE TABLES (1) CHAIR (1) TV CABINET/STAND (1) ADJUSTABLE FLAT SCREEN TELEVISION	GENERAL/DECORATIVE: CEILING MOUNTED IN CENTER OF ROOM, CEILING MOUNTED IN CLOSET TASK/DECORATIVE: PORTABLE LUMINAIRES TASK: FROM BELOW, LOW LEVEL LIGHTING	GENERAL/DECORATIVE: (1) CHANDELIER WITH CANDELABRA BULBS, (1) PENDANT TASK/DECORATIVE: (2) TABLE LAMPS WITH CFL BULBS TASK: (10) OUTDOOR MINI LED RESIDENTIAL RECESSED STEP LIGHTS (6 IN BEDROOM AND 4 IN CLOSET)
SPECIAL NEEDS OR CONSIDERATIONS: TURNAROUND SPACE OF 5' NEEDED FOR WHEELCHAIR. CABINETS & COUNTERTOPS AT LOWER HEIGHT OF 27"10". THE RICK AREA AT 9', AND OUTLETS AT 3'6" AFF.									
DINING ROOM, 104	206 SF	(6) CHAIRS (1) DINING TABLE (1) PEDASTAL FOR SCULPTURE	GENERAL/DECORATIVE: CEILING MOUNTED IN CENTER OF ROOM TASK: CEILING MOUNTED	GENERAL: (1) CHANDELIER, CANDELABRA BULBS TASK: (1) RECESSED DOWNLIGHT, (3) TRACK LIGHTS	MASTER BATHROOM, 108	115 SF	(1) SINK (1) TOILET (1) SHOWER WITH ADJUSTABLE SEAT	GENERAL: CEILING MOUNTED IN CENTER OF ROOM TASK: CEILING MOUNTED, FROM BELOW OUTDOOR LOW LEVEL LIGHTING	GENERAL: (1) PENDANT TASK: (1) WATERPROOF SHOWER RECESSED LIGHT, (4) OUTDOOR MINI LED RESIDENTIAL RECESSED STEP LIGHTS
SPECIAL NEEDS OR CONSIDERATIONS: TURNAROUND SPACE NEEDED FOR WHEELCHAIR ENOUGH CIRCULATION SPACE TO ENTER PATIO SPACE FOR ARTWORK OR WALL SPACE FOR PEDASTAL FOR SCULPTURE									
SPECIAL NEEDS OR CONSIDERATIONS: THE BATHROOM WAS RECONFIGURED TO CREATE MORE TURNAROUND SPACE FOR THE WHEELCHAIR BOUND CLIENT. THE TUB WAS REMOVED AND A SHOWER WAS ADDED THAT ALLOWS THE CLIENT TO WHEEL IN CHAIR OR PUT THE ADJUSTABLE SEAT UP. A RECESSED WATERPROOF LIGHT WAS ADDED. LOW LEVEL WATERPROOF LIGHTING WAS ADDED FOR CIRCULATION. GRAB BARS WERE ADDED IN THE SHOWER. GRAB BARS WERE ALSO ADDED BEHIND AND BESIDE THE TOILET.									

HUANG & PATTERSON INTERIORS

1600 PEACHTREE ST NW
ATLANTA, GA 30309

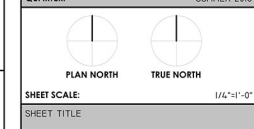
678.678.6788
888.888.8888
WWW.HPIINTERIORS.COM

KIN & CAROL WONG

270 17TH STREET NW
20TH FLOOR, F
THE ATLANTIC
ATLANTA, GA 30363
555.555.5555

ISSUE	MARK	DATE	DESCRIPTION
	H&P	08/07/13	CONSTRUCTION SET

PROJECT #:	W00001
DRAWN BY:	YUN HUANG & MONICA PATTERSON
CHECKED BY:	PROFESSOR LISET ROBINSON
CAD DWG FILE:	INDS302-HUANG_PATTERSON...
PROJECT III	
COURSE #:	INDS_302
COURSE NAME:	LIGHTING FOR THE INTERIOR
PROFESSOR:	L. ROBINSON
QUARTER:	SUMMER 2013



SHEET SCALE: 1/4"=1'-0"

SHEET TITLE

CLIENT PROFILE, DESIGN CONCEPT / NARRATIVE, PROGRAMMING

II-0.02

SCAD

NOT FOR CONSTRUCTION

LIGHTING SCHEDULE

LUMINAIRE			LAMP TYPE					GENERAL					
SYMBOL	TAG	DESCRIPTION	MANUFACTURER	FIXTURE NAME	(#) WATT / LAMP	COL. TEMP.	CRI	VOLTAGE	MOUNTING	FINISH	ACCESSORIES	PRODUCT #	NOTES
⊙	A	4 1/2" X 1 1/2" LED 10W CONCRETE TUBE 4.5 PENDANT	WEVER & DUCRE*	CONCRETE TUBE 4.5	(1) 10W LED	2700K	80	120V	CEILING	CONCRETE	NONE	887647	NA
⊙	B	METAL FILAMENT 14" PENDANT AGED STEEL	RESTORATION HARDWARE	METAL FILAMENT 14" PENDANT	(1) 12W 4, 900 EQUIMEL-CAGE FILAMENT BULBS	2500K	90	120V	CEILING	AGED STEEL	NONE	6800500 A5TL	NA
○	C	4" LEDme® OPEN REFLECTOR DOWNLIGHT HOUSING (INCLUDES LAMPS)	WAC LIGHTING	4" LEDme® OPEN REFLECTOR DOWNLIGHT	(6) 3W LED	3000K	85	120V	CEILING	BLACK	TRIM	HR-LED451TL-80/BN	NA
---	D	1' x 4' ACRYLIC, FLUORESCENT LINEAR INDOOR FIXTURE WITH CAST ALUMINUM ENDS IN BLACK BRONZE	LITHONIA LIGHTING	RISGR LINEAR	(2) 32W FLUORESCENT T8	3500K	80	120V	CEILING	ACRYLIC	NONE	116438Z	NA
—	E	ULTRASLIM 1" x 3/4" PROFILE, UNDERCABINET TASK LIGHT	WORKITTE eggs@workit	FR00	(1) LED STRIP	3500K	85	24V	UNDER CABINET	CARBON	SWITCH, CONNECTORS, OCCUPANCY SENSOR	FR0-241	NA
⊙	F	15" H X 7.5" D VINTAGE BELGIAN INDUSTRIAL IRON LIGHT (1920)	UNKNOWN	VINTAGE BELGIAN INDUSTRIAL IRON LIGHT	(1) 10W VINTAGE 1920 EDISON EQUIMEL-CAGE BULB	2500K	90	120V	CEILING	IRON	NONE	LU864740025	NA
⊙	G	WINE BARREL 6-ARM CHANDELIER	RESTORATION HARDWARE	WINE BARREL 6-ARM CHANDELIER	(6) 15W CANDELABRA BULBS	2500K	90	120V	CEILING	WOOD (FRENCH OAK) + METAL	DETACHABLE BALL, OPTIONAL EXTENSION CHAIN	6806091 8BN	NA
△ △ △	H	LED LOW VOLTAGE TRACK LUMINAIRE	WAC LIGHTING	DUNE	(3) 12V MR16	3000K	81	120V	CEILING	BRUSHED NICKEL	NONE	LHT-803LED-BN	NA
⊙	I	ARTEMIS™ CEILING FAN	etrisk@abe	ARTEMIS™ CEILING FAN	(1) 100W MINI-CAN HALOGEN	2800K	90	120V	CEILING	DISTRESSED KONA WOOD	NONE	FR03-0K	NA
⊙	J	BELGIAN INDUSTRIAL MIXER FLOOR LAMP-20 1/2"W X 19 3/8"D X 70"H	RESTORATION HARDWARE	BELGIAN INDUSTRIAL MIXER FLOOR LAMP	(1) 23W COMPACT FLUORESCENT	3000K	80	120V	NONE	NATURAL IRON FINISH	FRENCH DRUM SHADE	68270159 IRON	NA
⊙	K	SILVA DESK/TABLE LAMP, 12" x 9 5/8" - 21 5/8" H, WOOD BODY, ALUMINUM LEG, NECK & KNOB, BENT SHADE	CERNO	SILVA DESK/TABLE LAMP	(1) 8.3W LED	3000K	82	12V	NONE	Aluminum + Wood (Red Walnut)	NONE	8276859	NA
⊙	L	19th C. VINTAGE MERCURY GLASS TALL TABLE LAMP, 35 1/2"H	RESTORATION HARDWARE	19th C. VINTAGE MERCURY GLASS TALL TABLE LAMP	(1) 23W COMPACT FLUORESCENT	3000K	80	120V	NONE	CAST GLASS	DRUM SHADE	68270051 MCKY	NA
≡	M	JUNO INDOOR MINI LED STEP LIGHT RESIDENTIAL STEP LIGHTS	JUNO LIGHTING GROUP	JUNO INDOOR MINI STEP LIGHT, CUPRO, BRONZ	(2) 1W HIGH LUMEN LEDS	3000K	80	120V	WALL	BLACK TEXTURED	NONE	1M5W-3K-C-RL	NA
≡	N	JUNO OUTDOOR MINI LED STEP LIGHT RESIDENTIAL STEP LIGHTS	JUNO LIGHTING GROUP	JUNO OUTDOOR MINI STEP LIGHT, BRN	(2) 1W HIGH LUMEN LEDS	3000K	80	120V	WALL	BLACK TEXTURED	NONE	1M5W-3K-C-RL	NA
○	O	4 INCH LEDme® DOWNLIGHT LED471, SHOWER LIGHT, SQUARE	WAC LIGHTING	4 INCH LEDme® DOWNLIGHT LED471, SHOWER LIGHT	(6) 3W LED	3000K	80	120V	CEILING	CHROME	TRIM	HR-LED471-CH	NA

LIGHTING CALCULATIONS

TOTAL WATTS PER SQ. FOOT			DINING CALCULATIONS		LIVING CALCULATIONS		KITCHEN CALCULATIONS		BEDROOM CALCULATIONS	
ROOM NAME	ROOM #	CALCULATION	GENERAL LIGHTING		GENERAL LIGHTING		GENERAL LIGHTING		GENERAL LIGHTING	
ENTRY	101	26w/75 sq.ft.=.32 WATTS PER SQ.FT.	LIVING AREA		LIVING AREA		LIVING AREA		LIVING AREA	
UTILITY CLOSET	102	18w/23 sq.ft.=.78 WATTS PER SQ.FT.	180 LUMENS/FT X 6 LAMPS= 1,080 LM 1,080 TOTAL LUMENS/206 SQ FT= 5.24 LM PER SQ FT 5.24/2= 2.62 FOOTCANDLES (FC)		639 LUMENS/FT X 7 LAMPS= 4,473 LM 4,473 TOTAL LUMENS/206 SQ FT= 21.71 LM/SQ FT 16.94/2= 8.47 FOOTCANDLES (FC)		3,100 LUMENS/FT X 1 LAMPS= 3,100 LM 3,100 TOTAL LUMENS/131 SQ FT= 23.66 LM/SQ FT 23.66/2= 11.83 FOOTCANDLES (FC)		180 LUMENS/FT X 6 LAMPS= 1,080 LM 1,080 LUMENS/FT X 1 LAMPS= 120 LM 1,200 TOTAL LUMENS/219 SQ FT= 5.48 LM/SQ FT 5.48/2= 2.74 FOOTCANDLES (FC)	
KITCHEN	103	26.3w/131 sq.ft.=.20 WATTS PER SQ.FT.	TOTAL .44 WATTS PER SQ. FT.		TOTAL .48 WATTS PER SQ. FT.		TOTAL .49 WATTS PER SQ. FT.		TOTAL .59 WATTS PER SQ. FT.	
DINING ROOM	104	292w/206 sq.ft.=1.42 WATTS PER SQ.FT.	TASK LIGHTING		TASK LIGHTING		TASK LIGHTING		TASK LIGHTING	
LIVING ROOM	105	163w/204 sq.ft.=.80 WATTS PER SQ.FT.	659 LUMENS/FT X 6 LAMPS= 3,954 LM 3,954 LUMENS/FT X 3 LAMPS= 1,190 LM 4,914 TOTAL LUMENS/206 SQ FT= 23.85 LM/SQ FT 23.85/2= 11.93 FOOTCANDLES (FC)		1,600 LUMENS/FT X 1 LAMPS= 1,600 LM 420 LUMENS/FT X 1 LAMPS= 420 LM 2,020 TOTAL LUMENS/206 SQ FT= 9.85 LM/SQ FT 7.65/2= 3.83 FOOTCANDLES (FC)		120 LUMENS/FT X 3 LAMPS= 360 LM 639 LUMENS/FT X 2 LAMPS= 1,278 LM 1,438 LUMENS/FT X 4 LAMPS= 5,752 LM 3,410 TOTAL LUMENS/131 SQ FT= 26.03 LM/SQ FT 26.03/2= 13.02 FOOTCANDLES (FC)		1,600 LUMENS/FT X 2 LAMPS= 3,200 LM 3,200 TOTAL LUMENS/219 SQ FT= 14.61 LM/SQ FT 14.61/2= 7.31 FOOTCANDLES (FC)	
PATIO	106	104w/117 sq.ft.=.89 WATTS PER SQ.FT.	TOTAL .96 WATTS PER SQ. FT.		TOTAL .12 WATTS PER SQ. FT.		TOTAL 1.44 WATTS PER SQ. FT.		TOTAL .21 WATTS PER SQ. FT.	
MASTER BEDROOM	107	196w/219 sq.ft.=.89 WATTS PER SQ.FT.								
MASTER BATHROOM	108	88w/115 sq.ft.=.77 WATTS PER SQ.FT.								
TOTAL		1.00 WATTS PER SQ. FT.								

WATTS PER SQ. FOOT JUSTIFICATION:	DESIGN JUSTIFICATION:	DESIGN JUSTIFICATION:	DESIGN JUSTIFICATION:	DESIGN JUSTIFICATION:
THE GOAL FOR ENERGY CONSUMPTION IS TO USE 1.1 WATT PER SQ. FT. USING THE WHOLE BUILDING METHOD THE TOTAL WATTS PER SQ. FT. FOR THIS PROJECT EQUALS 1.00. TO CONSERVE ENERGY, LOWER WATTAGE BULBS WERE USED WHEN THE OPTION WAS AVAILABLE.	BASED ON THE CALCULATION ABOVE THE DESIGN OF THE LIGHTING FOR THE DINING AREA PROVIDES GENERAL LIGHTING FROM A CHANDELIER AND TASK LIGHTING FROM A RECESSED DOWNLIGHT AND TRACK LIGHTING.	BASED ON THE CALCULATION ABOVE THE DESIGN OF THE LIGHTING FOR THE LIVING AREA PROVIDES GENERAL ILLUMINATION UTILIZING RECESSED DOWNLIGHTS AND TASK LIGHTING FROM A FLOOR AND TABLE LAMP.	BASED ON THE CALCULATION ABOVE THE DESIGN OF THE LIGHTING FOR THE LIVING AREA PROVIDES GENERAL LIGHTING FROM A FLOURESCENT TUBE, RECESSED DOWNLIGHTS, UNDERCABINET LIGHTING, AND PENDANT LIGHTING FROM THE TASK LIGHTING IN THE SPACE.	BASED ON THE CALCULATION ABOVE THE DESIGN OF THE LIGHTING FOR THE LIVING AREA PROVIDES GENERAL LIGHTING IN THE FORM OF A CHANDELIER AND PENDANT. TASK LIGHTING IS GENERATED FROM TABLE LAMPS.

LIGHT REFLECTANCE VALUE ANALYSIS

FINISHES & REFLECTANCE FACTORS

ANALYSIS

FLOORING			WALLS			CEILING			FURNITURE/MILLWORK/CABINERY		
ROOM NAME	ROOM #	GENERAL DESCRIPTION / LRV	ROOM NAME	ROOM #	GENERAL DESCRIPTION / LRV	ROOM NAME	ROOM #	GENERAL DESCRIPTION / LRV	ROOM NAME	ROOM #	GENERAL DESCRIPTION / LRV
LIVING AREA	105	HARD - 3/4" x 7" x RL 3-1/2" STRIP HARDWOOD FLOORING	ENTRY	101	PAINT - EDWARDIAN LINEN SL/W/210, RALPH LAUREN	ENTRY	101	PAINT - MONTAUX DRIFTWOOD	KITCHEN	103	CAB - KITCHEN CABINETS
DINING AREA	104	GREY SKY, FRENCH WHITE OAK	UTILITY ROOM	102		UTILITY ROOM	102				WALNUT
MASTER BEDROOM	107	LRV: 25%	KITCHEN	103	LRV: 75%	KITCHEN	103	RL/W/229, RALPH LAUREN			LRV: 16%
			DINING AREA	104		DINING AREA	104	LRV: 70%			
ENTRY	101	6" x 24" PORCELAIN TILE	LIVING AREA	105		LIVING AREA	105		LIVING ROOM	105	CAB - CUSTOM TV STAND/CABINET
UTILITY ROOM	102	IRS WOOD, GREYWOOD	MASTER BATHROOM	108		MASTER BEDROOM	107		MASTER BEDROOM	107	WALNUT
KITCHEN	103	LRV: 75%				MASTER BATHROOM	108				LRV: 16%
PATIO	106		MASTER BEDROOM	107	PAINT - CHROMA VIOLET RL/Y/201, RALPH LAUREN						
MASTER BATHROOM	108				LRV: 12%						

THE AVERAGE LRV FOR THE ENTIRE CONDO IS 44.03. SEVERAL OF THE LIGHTING FIXTURES ARE MADE OF NATURAL ELEMENTS LIKE WOOD AND IRON WHICH WORK WELL WITH THE GREY FRENCH OAK RECLAIMED HARDWOOD FLOORS. THE LINEN COLORED WALLS PROVIDE A NEUTRAL BACKDROP FOR THE CLIENT'S ARTWORK AND SCULPTURE. LIGHTING IS A CENTRAL FACTOR IN PROVIDING VISIBILITY AND CONTRAST TO THAT NETWORK. A PALE GREEN PAINT COLOR ON THE CEILING WILL BE A SOFTER COMPLEMENT TO THE WOOD BEAMS AND A LIGHTER LRV THAN TRADITIONAL WHITE. THERE WILL BE ONE DARK VIOLET ACCENT WALL IN THE MASTER BEDROOM. THIS SHOULD MAKE THE MASTER BEDROOM SPACE MORE SOOTHING. KITCHEN CABINETS AND CUSTOM CABINETRY WILL BE MADE OF WALNUT. THIS WILL HELP SOFTEN SOME OF THE FLUORESCENT LIGHTING IN THE SPACE.

HUANG & PATTERSON INTERIORS

1600 PEACHTREE ST NW
ATLANTA, GA 30309

678.678.6788
888.888.8888
WWW.HPIINTERIORS.COM

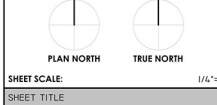
KIN & CAROL WONG

270 17TH STREET NW
20TH FLOOR, F
THE ATLANTIC
ATLANTA, GA 30363

555.555.5555

ISSUE	MARK	DATE	DESCRIPTION
	H&P	08/07/13	CONSTRUCTION SET

PROJECT #:	W00001
DRAWN BY:	YUN HUANG & MONICA PATTERSON
CHECKED BY:	PROFESSOR LISET ROBINSON
CAD DWG FILE:	INDS302-HUANG_PATTERSON...
COURSE #:	INDS_302
COURSE NAME:	LIGHTING FOR THE INTERIOR
PROFESSOR:	L. ROBINSON
QUARTER:	SUMMER 2013



1/4" = 1'-0"
SHEET TITLE

LIGHTING SCHEDULE, LIGHTING CALCULATIONS, LRV ANALYSIS

II-0.03
SCAD

